



Draft Strategic Plan for Fife (2016-19) Consultation

7th October 2015 – 6th January 2016





The Fife Partnership has been established

- The duties will be taken forward by the Integration Joint Board (IJB).
- The IJB is now a Legal Entity
- Full powers can be delegated to it once they approve the Fife Strategic Plan – by 1st April 2016.
- As set out in :

The Public Bodies(Joint Working)(Scotland) Act 2014



Why do we need a Strategic plan ?

- Requirement of the legislation
- The new Partnership is fully responsible and accountable for the planning and delivery of a wide range of services.
- Need to achieve positive and measurable outcomes for the people of Fife.



How has it been developed?

- The Strategic Planning Group
- Existing Strategies e.g. Carers and Mental Health Strategies
- Current priorities from the Integrated Care Fund
- A number of workshops and staff events
- Members of the public at local events



The Consultation Documentation:-

1. Summary Report
2. Full Strategic Plan
3. Supporting Appendices
4. Questionnaire Response sheet

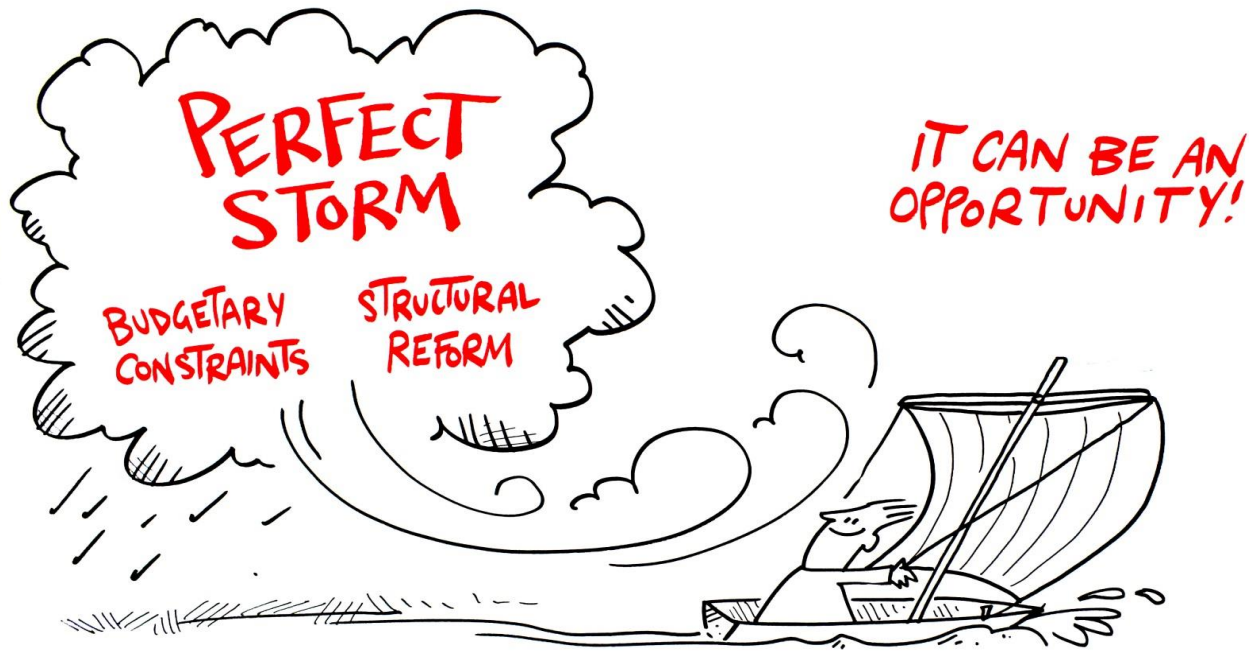


What does the plan contain?

- Introduction and background
- Vision, Mission and Values
- The National Health and Well being Outcomes
- The Case for Change and Stepping Stones
- The 4 Strategic Priorities, Actions and Impact
- Finance
- How will it affect you?



The current environment





Strategic Priorities

- Prevention and Early intervention
- Integrated and Coordinated Care
- Improving Mental Health and Wellbeing
- Tackling Inequalities



Prevention and Early intervention

- Focus activity to support people to manage own conditions and stay healthy and independent for longer.
- Promote early intervention and anticipatory care planning.

Befriending, local area coordinators, clinical pathways, technology enable care.



Integrated and Coordinated Care

- Service redesign to coordinate care at home
- Develop work across sectors
- Improve Out of Hours (OOHs) response

Improved response to acute care in community settings, extend into OOHs for key services, explore how new housing and care home facilities can offer different options.



Improving Mental Health and Wellbeing

- Reduce stigma around mental illness.
- Emphasis on recovery wherever possible in community setting.
- Information and support to help notice early signs and prevent mental health problems.

Redesign to provide community models for people in hospital, challenge stigma through education, explore further service integration.



Tackling Inequalities

- Ensure that people have access to appropriate housing and adaptations to enable independent living.
- Work with community planning partners to improve equity of access to services.

Develop joint Locality plans, support priorities in Health and Wellbeing Plan, work to make changes to meet Local housing Strategy requirements.



Localities

- The Strategic Plan should be built up from the needs of each locality – this is work in progress.



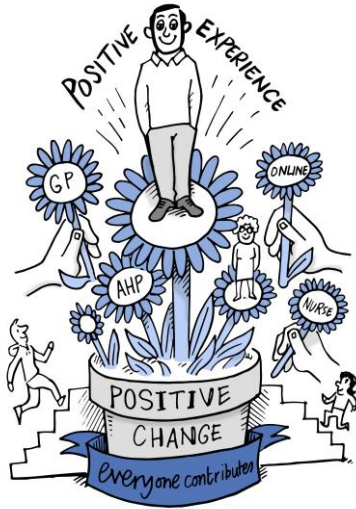
Public Participation and Engagement

Using existing network groups key themes identified:

- Support culture change
- Going to where people are
- Making sure things change for service users
- Using groups who have the knowledge.



Health & Social Care Integration



The public as partners





Getting involved

- Complete the questionnaire today
- Go online and complete response sheet



Next Steps

- The Consultation Responses will be analysed
- The Strategic Plan will be redrafted and presented to the Integration Joint Board in February 2016.
- The final, approved plan will be published online after approval.



Thank you

heather.ford@fife.gov.uk

fiona.mackenzie3@nhs.net

03451 55555 extension 444230

fifedirect.org.uk/integration